

Hartford

13 Copperpond Link

1930 Sq. Ft. (April Possession)

\$415,800 (including Lot/GST)



9' Main Floor Ceilings

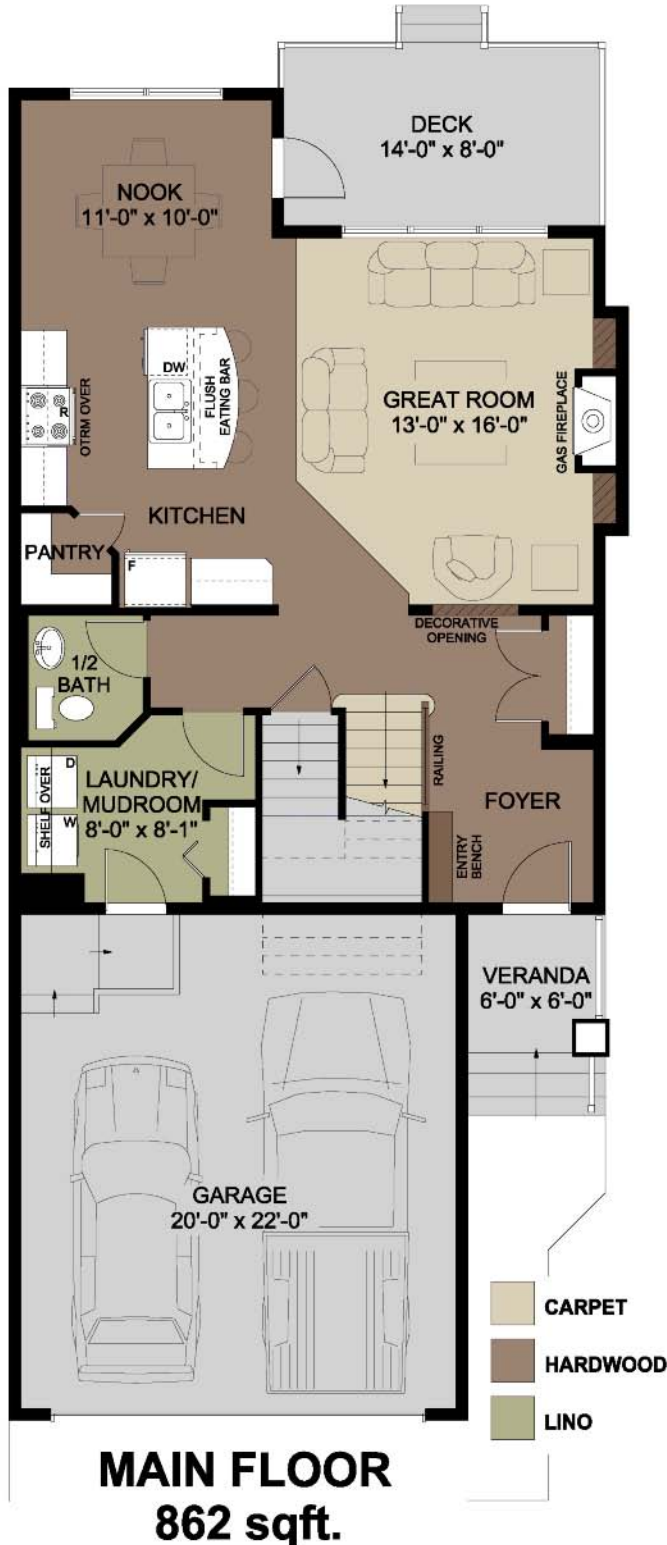
Upgraded Cabinetry

Granite Counters

Hardwood Flooring

Rear Deck with Aluminum Railing

\$3000 Appliance Allowance



Features

- Large Open Kitchen / Great Room
- Spacious Master Suite / Ensuite
- Main Floor Ceiling Height of 9'
- Granite Counters to Kitchen & Ensuite
- Hardwood to Main Floor
- Knockdown Ceilings Throughout
- High Eff. Furnace w/ Programmable Thermostat
- Paramount Finishing Package

Contact Info

Peter MacKenzie: 236-1395

